

DIY Final System Check: Frontline Timeclock

Do-It-Yourself

DIY

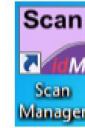
Step 5:
Final System
Check

Step 5 is the Final System Check. This is when the identiMetrics system is tested to ensure that everything is working **prior** to GO-Live.

Although identiMetrics recommends we do this final step together by scheduling an appointment with a Biometric Expert, this comprehensive checklist will guide you through a DIY Step 5: Final System Check.

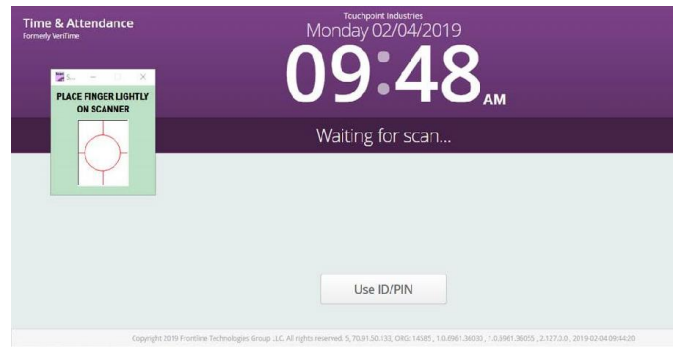
Software & Finger Scanner Checks

- identiMetrics software installed and presenting with a short cut on the desktop.
- Click 'Start Kiosk Mode' icon on the desktop. Make sure that Scan Manager and the correct Frontline URL associated with Timeclock device automatically launches.



Pre-scan Checks

- Scan Manager open and reads, "PLACE FINGER LIGHTLY ON SCANNER".
- Frontline page open and ready to receive finger scan input.



Scan Checks

- Scan Manager responds to placement to guide the user.
- When an enrolled person's finger scans successfully, an affirmative sound is heard and volume is appropriate for user to hear the audio feedback.
- When an enrolled person scans their finger correctly, Frontline responds with the clock event for that person. (If Frontline does not respond with the clock event for that person, please refer to the "Troubleshooting Employees who can not clock in at Kiosk Guide" in the Step 5 area on GOidM.com.)

Enrollment Check

- Check the database for the number of enrolled users (green dots) before using. identiMetrics strongly recommends having 99% of enrollments completed for the best results.

Ergonomics & Best Practices

- Finger scanner located at an appropriate height for easy finger placement, and free from clutter and obstacles.
- Wall mounted devices should be no higher than 48".
- Users have been trained and have had ample practice using the finger scanner.
- Finger placement guide has been posted for users to reference
- Access to water to dampen the finger of harder to identify users.
- Access to alcohol wipes for regular scanner cleaning.

Need assistance? It's easy to get in touch with one of our Biometric Experts!



GO .com



support@identimetrics.net



215-836-5640