

How to Find the version of identiMetrics



identiMetrics™
Cheat Sheet

There are two ways to find the version of identiMetrics. One is through the Scan Manager, the other is through the Enrollment Manager.

Finding the version through Scan Manager

1. Open Scan Manager.



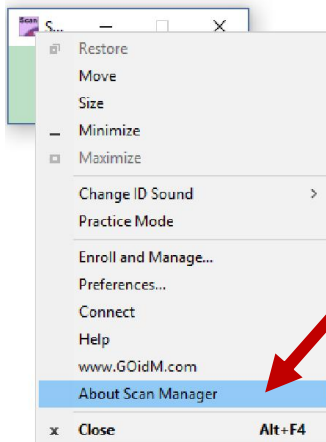
← Double Click Here

2. Click on the purple box on the upper left of the Scan Manager.



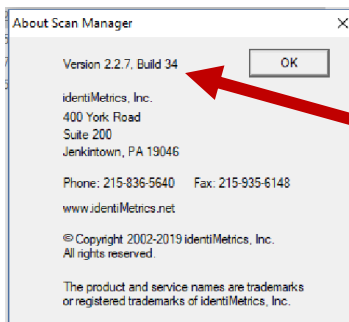
← Click Here

3. Choose "About Scan Manager" from the dropdown.



Click Here

4. Your version is located to the left of the 'OK' button.

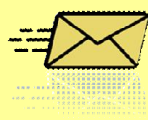


Version located here

Need assistance? It's easy to get in touch with one of our Biometric Experts!



www.GOidM.com



support@identimetrics.net



215-836-5640

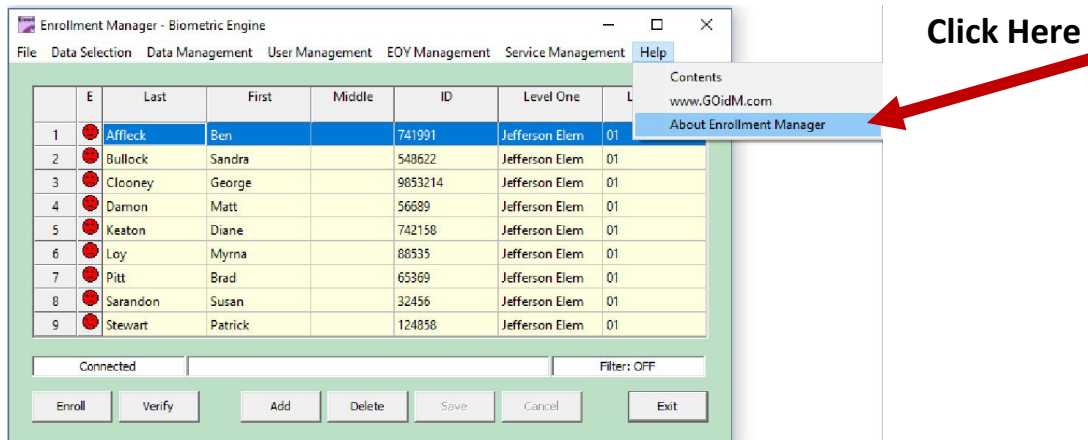


identiMetrics™

Cheat Sheet

Finding the version through Enrollment Manager

1. Open Enrollment Manager and log in. Click on Help then 'Help'.



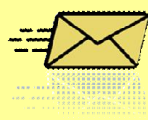
2. Your version is located to the left of the 'OK' button.



Need assistance? It's easy to get in touch with one of our Biometric Experts!



www.GOidM.com



support@identimetrics.net



215-836-5640